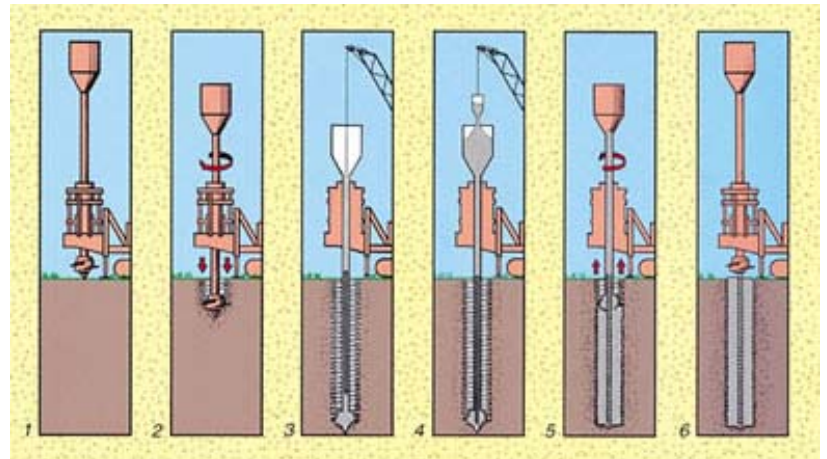




ATLAS PILES

The Atlas pile is a unique screw shaped reinforced concrete pile design to take maximum advantage of all the available soil capacity by displacing the soil rather than replacing it.

The Atlas pile is a concrete cast in-situ and is not to be confused with the steel screw pile which has much lower load carrying capacity. The piles can be installed with a conventional purpose built 'Atlas' rig or the new generation high torque hydraulic piling rigs allowing piles up to 30m to be installed in a single pass. As these piles are genuine displacement piles with the auger being thrust into the ground with a minimum of 40 tonne metre torque negligible spoil is produced for subsequent removal, very important consideration when piling in contaminated or aggressive soils.



DISPLACEMENT PILES

This pile type is similar to the Atlas pile with the exception that most displacement piles are straight shafted as opposed to the helical shafts on the Atlas piles. These piles are installed using modern, very high torque hydraulic drilling rigs which rotate a specialised displacement tool into the ground. The action of the specially designed tool causes the ground to be compacted, when the tool has reached the required depth it is withdrawn whilst concrete is pumped out through the hollow stem.

The installation process of both types is totally vibration free but the major advantage is that the process produces no spoil with, the exception of minor ground heave, thus obviating the need to deal with any contaminated spoil.